



Electrolux
PROFESSIONAL

Standard Preparation 1000 mm Solid Wall Shelf with Brackets

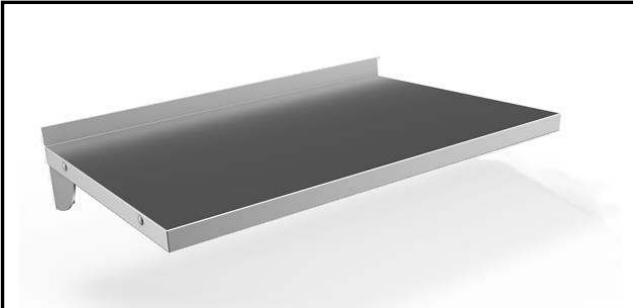
ITEM # _____

MODEL # _____

NAME # _____

SIS # _____

AIA # _____



132823 (WSS104N)

Solid Wall Shelf with
brackets, 1000mm

Short Form Specification

Item No. _____

Made from 304 AISI stainless steel, 1mm in thickness.
Upturned edges. Integral radiused rear upstand, h=30mm.
Wall brackets allow the shelf to be positioned at different
heights.

Main Features

- Smooth surfaces, rounded corners, absence of edges and rear upstand facilitate cleaning operations.
- Sturdiness, stability and reliability of table accurately tested.

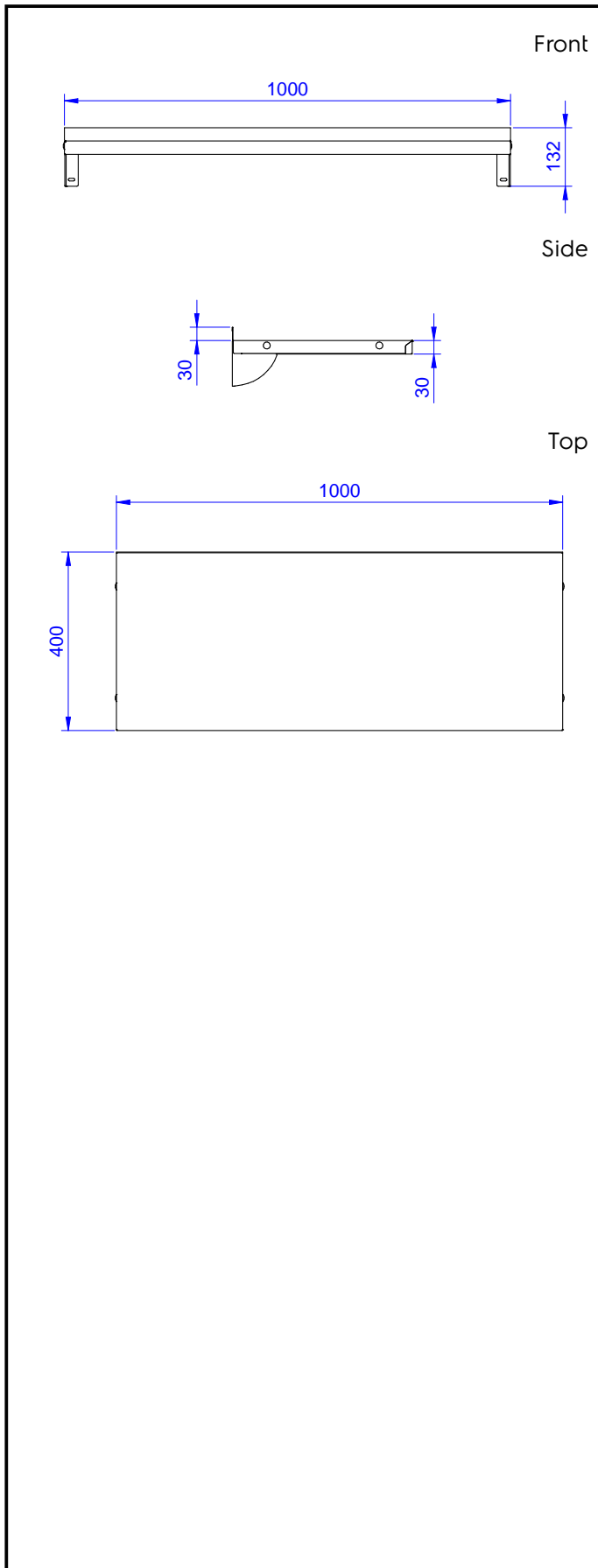
Construction

- Made entirely in 304 AISI stainless steel, 10/10 in thickness; with a Scotch Brite finish.
- Upturned edges, 50 mm high, to guarantee operator safety.
- Incorporates a rear upstand to avoid spillage between wall and shelf.
- 100 mm upstand with 10 mm radiused corner and 13 mm deep, designed to be used against a wall.

APPROVAL: _____



Experience the Excellence
www.electroluxprofessional.com



Key Information:

| | |
|------------------------------|---------|
| External dimensions, Width: | 1000 mm |
| 132823 (WSS104N) | |
| External dimensions, Depth: | 400 mm |
| External dimensions, Height: | 30 mm |
| Upstand Dimensions, Height: | 23 mm |
| Upstand Dimensions, Depth: | 2 mm |
| Upstand Dimensions, Radius: | R=10 |
| Net weight: | 2 kg |